

# Getting ready to surf with T-Mobile HotSpot.

Most WLAN enabled laptops are pre-configured and you can get access to the T-Mobile service straight away. Where required, simply compare the settings on your laptop with the configuration instructions below to use the service. If you have any technical queries, please contact customer services (see reverse of leaflet for details).

Instructions are based on the Windows XP operating system. Settings for other Windows based systems are similar.

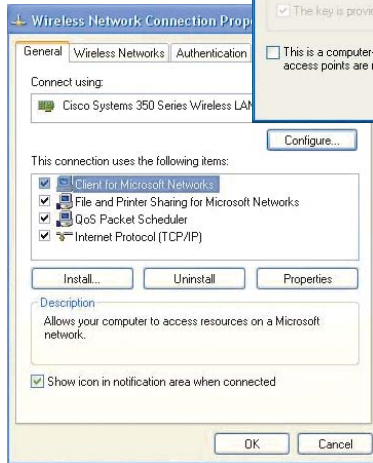
## To confirm your SSID settings, follow these steps:

- 1 Click on 'Start'
- 2 Go to 'Control Panel'
- 3 Choose 'Network Connections'
- 4 Highlight and right-click on your Wireless Network Connection. Choose 'Properties' from the menu.



Highlight the 'Wireless Networks' tab. The network SSID "tmobile" should be visible under the 'Available networks' section.

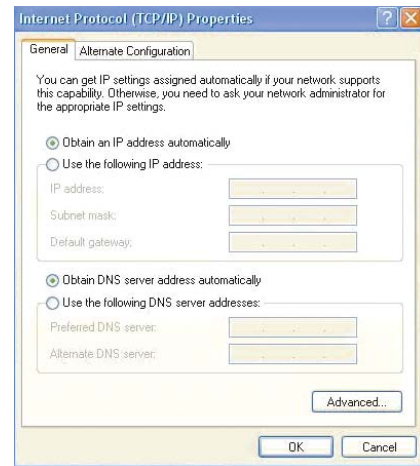
Ensure that the Data encryption (WEP enabled) option is not selected, as T-Mobile HotSpot is a public service.



Click on the 'General' tab to make this visible.

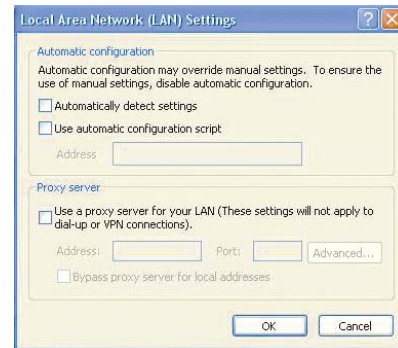
Highlight the 'Internet Protocol TCP/IP' option and click on 'Properties'.

Select 'Obtain an IP address automatically' and 'Obtain DNS server address automatically' and click OK to confirm.



## To configure Microsoft Internet Explorer:

- 1 Open your browser and go to the 'Tools' menu
- 2 Select 'Internet Options' and the tab 'Connections'
- 3 Under 'LAN Settings' open the window for 'Local Area Network (LAN) settings'



Ensure the following options are not selected:

- 'Automatically detect settings'
- 'Use automatic configuration script'
- 'Use a proxy server for your LAN'

Click OK to confirm.